

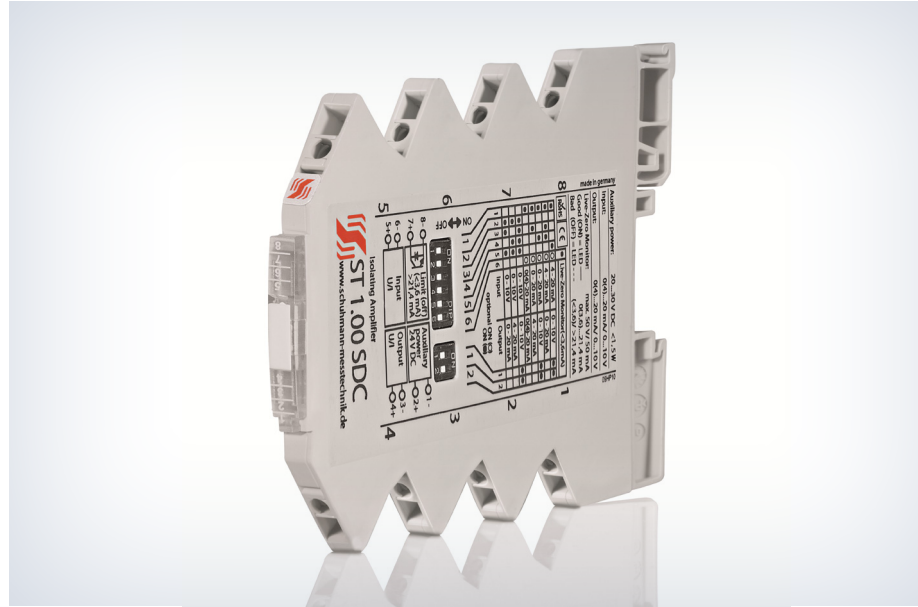


Universal Isolating Amplifier with Live-Zero Monitor

ST 1.00 SDC

FEATURES

- **Input:**
Current 0(4)...20 mA or
Voltage 0...10 V
- **Output:**
Current 0(4)...20 mA or
Voltage 0...10 V
- **Calibrated inputs and outputs for all ranges**
- **Transistor output for Live-Zero Monitor**
- **Galvanic 3-way isolation of 3,75 kV**
- **Low internal consumption**



FUNCTION

Amplifiers are used for the isolation or conversion of analog signals. This guarantees a safe decoupling between the sensor and evaluation circuit and any influence of other sensor circuit among each other is absolutely impossible. Input and output of the ST1.00SDC are equipped with a current- or voltage range.

The range selection is being made by DIL-switch S1 and S2 on the side, the desired adjustment can be chosen from the table on the side. The integrated Live-Zero Monitor is also able to control the input current ranges on error.

